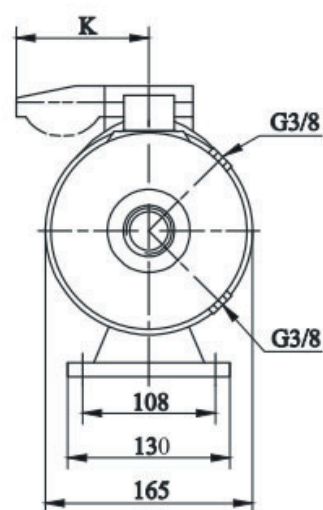
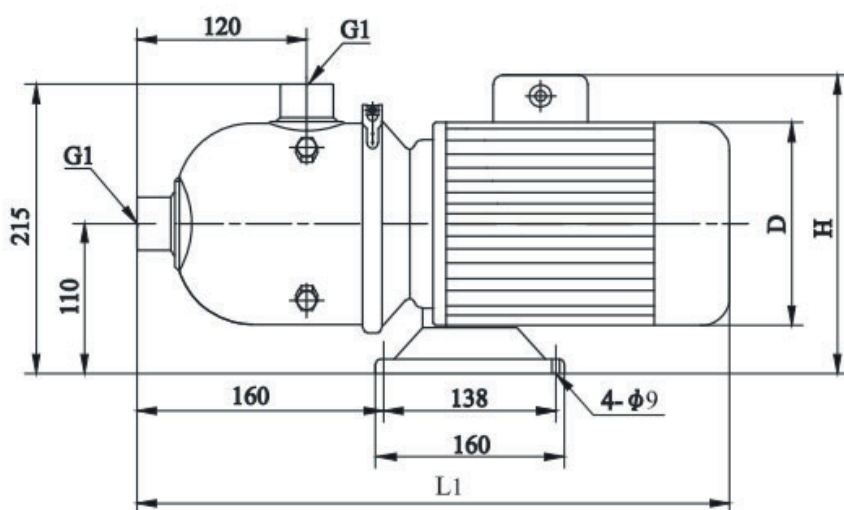




Zhejiang Shoufei Pump Industry Co.,Ltd

CHL2 Series General Dimensions

Model	electric machinery(KW)	Q(m ³ /h)	0.5	1	1.5	2.0	2.5	3.0	3.5
CHL2-20	0.37	H(m)	19	18	16.5	15	13	10	7.5
CHL2-30	0.37		28	26.5	24.5	22	19	15.5	12
CHL2-40	0.55		36	34.5	33	29	25	20.5	16
CHL2-50	0.55		45.5	43	40	36	31.5	26.5	20.5
CHL2-60	0.75		53.5	51	48	44	39	32	24



Model	Dimension(mm)				Weight (kg)
	L1	D	H	K	
CHL2-20	400	145	215/230	/96	13
CHL2-30	400	145	215/230	/96	13
CHL2-40	400	145	215/230	/96	13
CHL2-50	400	145	215/230	/96	13
CHL2-60	445	170	225/245	/100	15

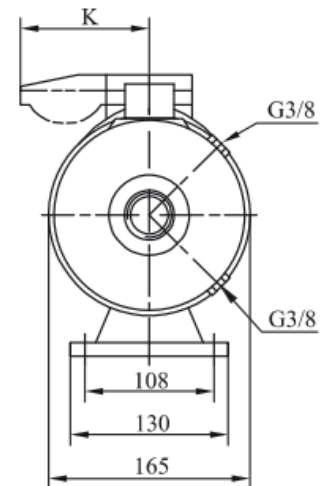
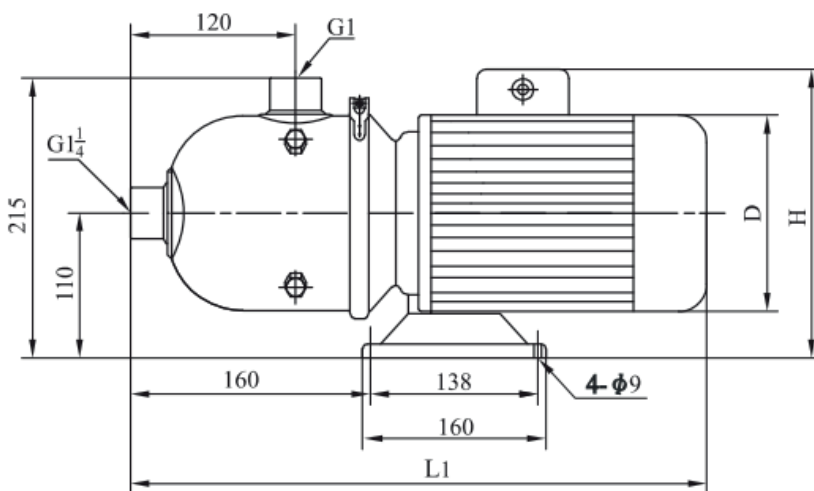




Zhejiang Shoufei Pump Industry Co.,Ltd

CHL4 Series General Dimensions

Model	electric machinery(KW)	Q(m ³ /h)	1	2	3.0	4.0	5.0	6.0	7.0
CHL4-20	0.37	H(m)	19	18	17	15	12.5	10	8
CHL4-30	0.55		28	27	26	23.5	20.5	17	13
CHL4-40	0.75		37.5	36	34	31	27	23	19



Model	Dimension(mm)				Weight (kg)
	L1	D	H	K	
CHL4-20	400	145	215/230	/96	12
CHL4-30	400	145	215/230	/96	12
CHL4-40	400	170	225/245	/96	15

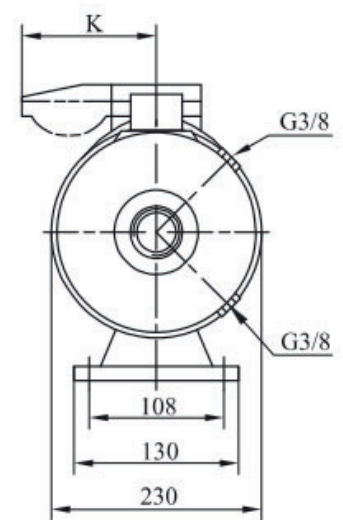
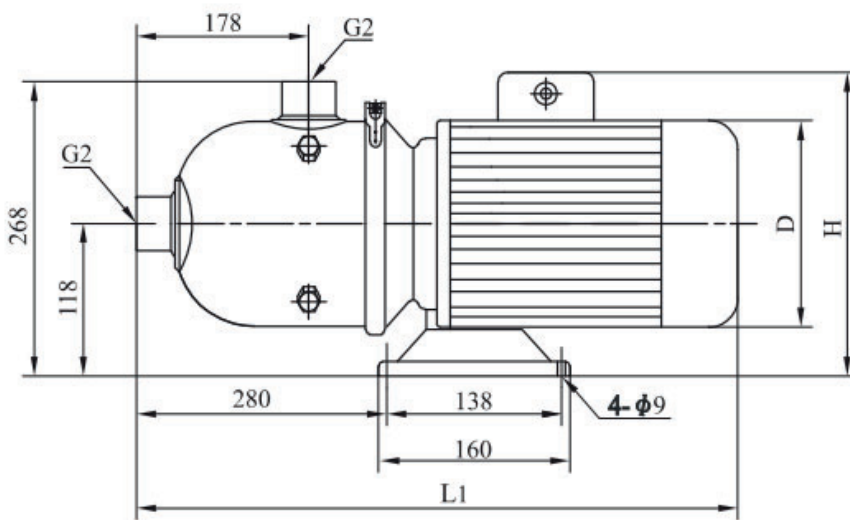




Zhejiang Shoufei Pump Industry Co.,Ltd

CHL8 Series General Dimensions

Model	electric machinery(KW)	Q(m ³ /h)	5	6	7.0	8.0	9.0	10.0	11.0
CHL8-10	0.75	H(m)	10	9.5	9.3	9	8	7.5	7
CHL8-20	0.75		20	19.5	19	18	17	15.5	14
CHL8-30	1.1		29.5	29	28	27	25	23	21
CHL8-40	1.5		39	38	37	35	33	30.5	27.5
CHL8-50	2.2		51	49.5	47.5	45	42.5	39.5	36



Model	Dimension(mm)				Weight (kg)
	L1	D	H	K	
CHL8-10	560	170	230/265	/100	20
CHL8-20	560	170	230/265	/100	20
CHL8-30	560	170	230/265	/100	25
CHL8-40	580	180	240/270	/100	25
CHL8-50	580	180	240/270	/100	30

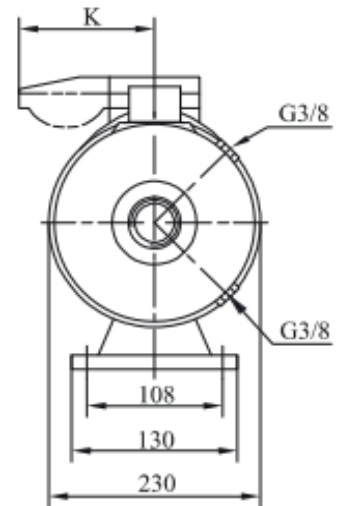
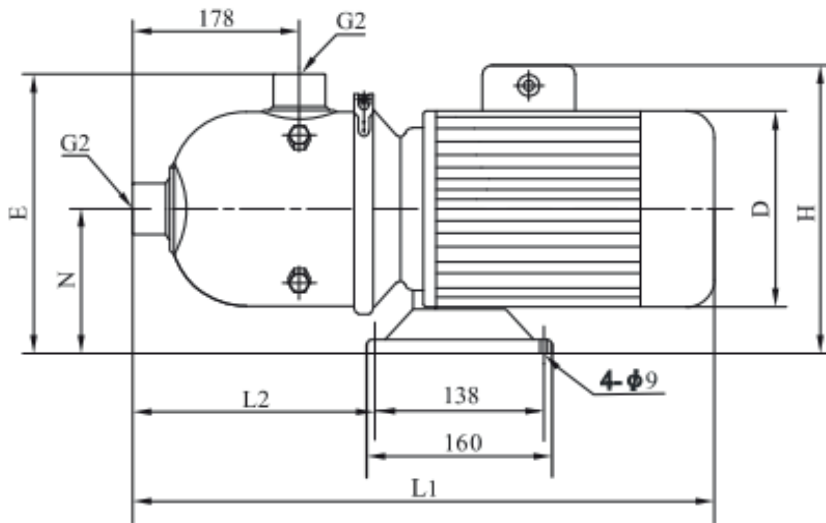




Zhejiang Shoufei Pump Industry Co.,Ltd

CHL12 Series General Dimensions

Model	electric machinery(KW)	Q(m ³ /h)	7	8	9.0	10.0	11.0	12.0	13.0	14.0	15.0	16.0
CHL12-10	0.75	H(m)	11.5	11.2	11	10.5	10	9.5	9	8	7	6
CHL12-20	1.2		23	22.5	22	21.5	20.5	19.5	18.5	17	15.5	13
CHL12-30	1.8		35	34.5	33.5	32.5	31	29.5	28	26	23.5	20
CHL12-40	2.4		47	46	45	43.5	41.5	39.5	37.5	35	31.5	27.5
CHL12-50	3		60	58	56.5	55	52.5	50	47	44	40	35



Model	Dimension(mm)							Weight (kg)
	L1	L2	H	D	E	N	K	
CHL12-10	560	280	230/265	170	268	118	/100	20
CHL12-20	560	280	230/265	170	268	118	/100	21
CHL12-30	560	280	240/270	180	268	118	/100	25
CHL12-40	580	280	240/270	180	268	118	/100	29
CHL12-50	610	270	270/	195	276	126		34

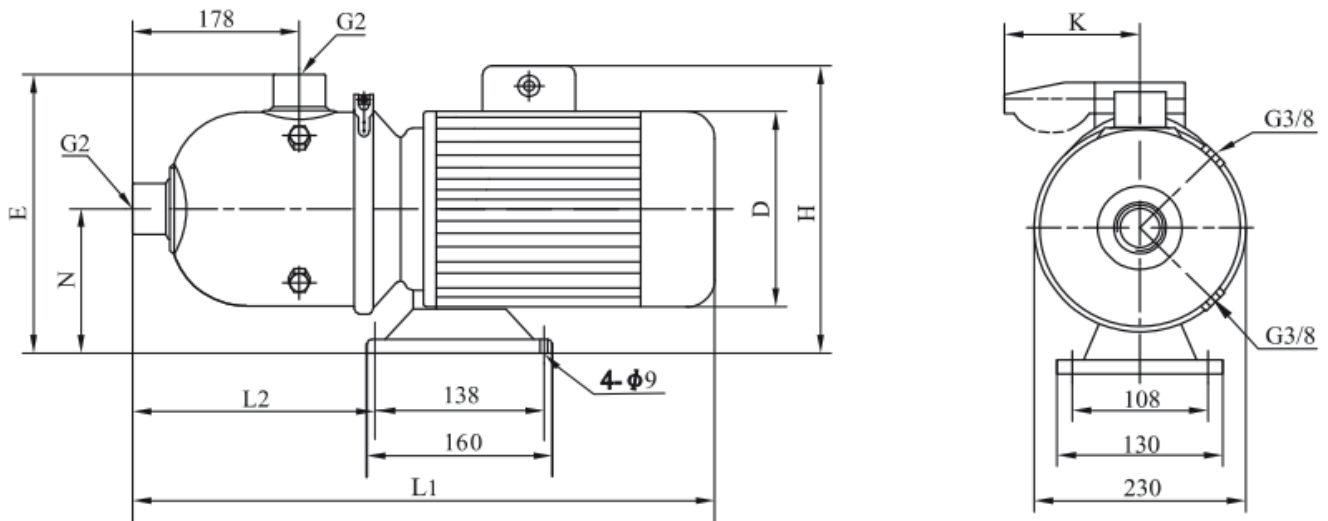




Zhejiang Shoufei Pump Industry Co.,Ltd

CHL16 Series General Dimensions

Model	electric machinery(KW)	Q(m ³ /h)	8	10	12.0	14.0	16.0	18.0	20.0	22.0
CHL16-10	1.1	H(m)	12.8	12.5	12	11.5	10.5	9.5	8	7
CHL16-20	2.2		26	25	24	23	21.7	20	18	15.5
CHL16-30	3		40	39	38	36	34	31.5	29	25



Model	Dimension(mm)							Weight (kg)
	L1	L2	H	D	E	N	K	
CHL16-10	560	280	230/265	170	268	118	/100	20
CHL16-20	560	280	240/270	180	268	118	/100	27
CHL16-30	610	270	270/	195	276	126		34

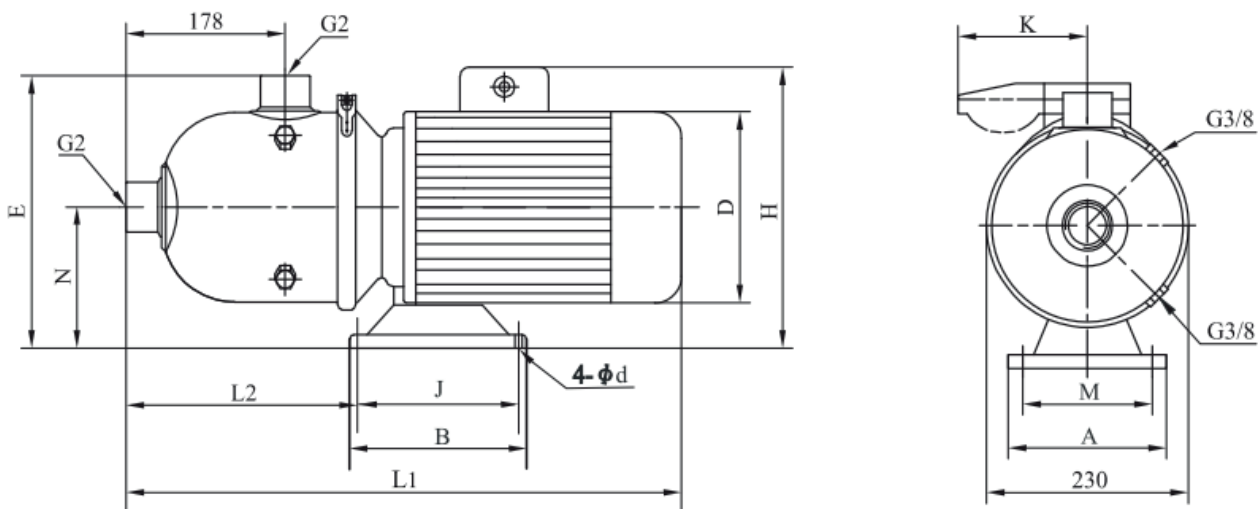




Zhejiang Shoufei Pump Industry Co.,Ltd

CHL20 Series General Dimensions

Model	electric machinery(KW)	Q(m³/h)	H(m)									
			10	12	14.0	16.0	18.0	20.0	22.0	24.0	26.0	28.0
CHL20-10	1.1	H(m)	13.5	13	12.5	12	11	10	9	8	7	6
CHL20-20	2.2		27	26.5	25.5	25	23.5	22	20.5	18.5	17	14.5
CHL20-30	4		39.5	39	38	37.5	35.5	34	31.5	29	26	23



Model	Dimension(mm)												Weight (kg)
	L1	L2	H	D	E	N	A	M	B	J	d	K	
CHL16-10	560	280	230/265	170	268	118	130	108	160	138	9	/100	21
CHL16-20	560	280	240/270	180	268	118	130	108	160	138	9	/100	28
CHL16-30	650	360	270/	220	270	120	230	190	170	140	12		42

